



dpp®



# Sustainability Statement 2019

Our environmental impact reporting is aligned with the Greenhouse Gas (GHG) Protocol.

## **Scope:**

The DPP's operational boundary includes emissions from the following sources:

Business travel via train, and air

These emissions are reported as follows:

*Scope 1 (direct emissions):*

None

*Scope 2 (indirect emissions):*

None

*Scope 3 (other indirect emissions):*

Emissions from business travel by Employees via train, commercial plane

For the purpose of reporting DPP's operations at the address 4th Floor, 200 Grays Inn Road, London WC1X 8HF is only in scope.

Reporting encompasses the operations of Digital Production Partnership Ltd whose registered office address is 2 Waterhouse Square, 140 Holborn, London, EC1N 2AE.



[thedpp.com/sustainability](https://thedpp.com/sustainability)



# Inventory 2019



## **Scope 1 - direct emissions - none**

Emissions from sources that you own or control, like a furnace in the basement of your office building, or business travel in a company car

### **Statement**

DPP confirms that it does not own any assets that fall into Scope 1 of GHG Protocol.

## **Scope 2 - indirect emissions - none**

Those from the generation of purchased electricity, steam, or heat

### **Electricity use**

The DPP is hosted by ITV Plc at its office in Grays Inn Road. The energy supply at this location is supplied from 100% renewable sources and is already reported by ITV and as such the DPP will not be formally reporting on its energy use. However the DPP will publish its estimated office energy consumption that covers facilities, utilities, desktop, laptop and monitors used by DPP staff. DPP will provide a proxy indicator of energy intensity using data provided by ITV.

### **Statement**

DPP confirms that it does not have any indirect emissions that fall into Scope 2 of GHG Protocol.

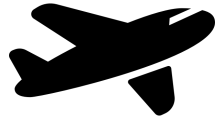






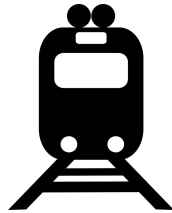
# Inventory 2019

## Scope 3 - indirect emissions - Reporting not mandatory



### Air Travel

DPP reports on air travel undertaken by staff and by others who have been invited to travel at the request of the DPP at their own or the DPP's expense. (Example invited speakers to DPP events where the DPP has paid for or reimbursed the travel costs)



### Rail and Car Travel

DPP does not account for and report on business travel by car and domestic train because it is such a small percentage of the total miles traveled. However the DPP does report on international train journeys (e.g. from London to Amsterdam)



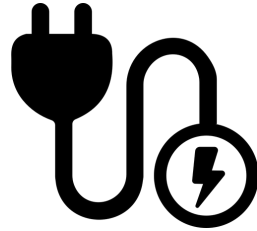
### Employee Commute to work

DPP does not account for employee commute to work. Majority of commute to work are undertaken by public transport. Only one employee drives or rides into work occasionally.





# Performance 2019



## Energy Performance

Total estimated DPP energy consumption is 3249 kWh inclusive of electronics, lighting, cooling etc. Out of this 378 kWh is estimated for staff laptops and monitors.

100% of electrical energy is from renewable sources

[https://www.gpe.co.uk/media/3422/final\\_23009\\_sustainability-performance-data-report-1-1.pdf](https://www.gpe.co.uk/media/3422/final_23009_sustainability-performance-data-report-1-1.pdf)

Total estimated energy intensity for the calendar year 2019 is 325kWh pa per person

Energy intensity is calculated on the basis of the number of staff employed by DPP including regular part time employees (working more than 1 day per week).

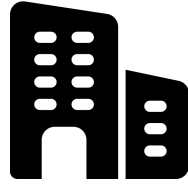
 thedpp

 @thedppltd

[thedpp.com/sustainability](https://thedpp.com/sustainability)



# Performance 2019



## Emissions Performance

Total estimated emissions saved for the calendar year 2019 is a total of 831 kg CO<sub>2</sub>e\* consisting of 97 kg CO<sub>2</sub>e\* from DPP use of office computing equipment. The remaining is from other office facilities such as lighting and cooling, .

\*Emissions factor of 0.2556 taken from UK Gov, [Department of Business, Energy & Industrial Strategy. GHG conversion factors - 2019](#)



Total emissions from business travel is 45.78 tonnes of CO<sub>2</sub>

Staff travel emissions is 26.83 tonnes of CO<sub>2</sub>

Speaker travel emissions is 18.95 tonnes of CO<sub>2</sub>

Staff took 25 flights in total

Speakers took 19 flights in total



This is the equivalent of Greenhouse Gas emissions from 9.9 cars being driven all year or 113,598 miles driven by an average passenger car.

 thedpp

 @thedppltd

[thedpp.com/sustainability](https://thedpp.com/sustainability)



# Performance 2019

## Carbon Offsetting Performance

Total of 50 trees were planted as part of a Native tree reforestation programme through Mossy Earth. Tree IDs in the range SC\_F\_355 - SC\_F\_4 - GPS coordinates N 45°32'28.78" E 25°9'4.54"

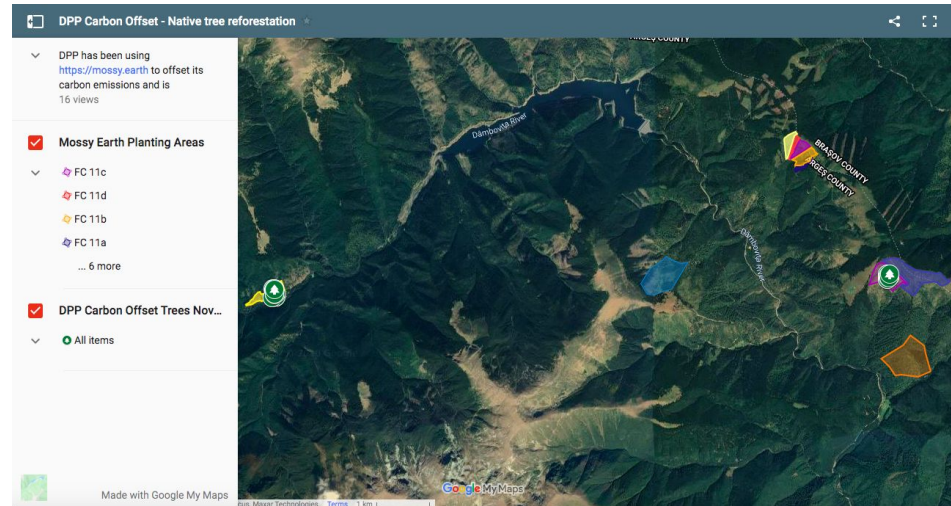
See location - <https://bit.ly/2JrInq9>

For more info - <https://www.members.earth/forest-database/>

**12.5**  
**tonnes CO<sub>2</sub>**  
**sequestered**



[thedpp.com/sustainability](https://thedpp.com/sustainability)





# Performance 2019

## Carbon Offsetting Performance

40 tonnes Certified Emissions Reduction was purchased through the UN Carbon Platform against a Gold Standard Project.

<https://offset.climateneutralnow.org/iot-mabagas-limited-power-plant-pudhuchatram-8288->

**40**  
**tonnes CO<sub>2</sub>**  
**offset**



[thedpp.com/sustainability](https://thedpp.com/sustainability)







# Performance 2019

## Total Emissions

**47.5**

tonnes CO<sub>2</sub>e

## Total Offset

**52.5**

tonnes CO<sub>2</sub>e

 thedpp

 @thedppltd

[thedpp.com/sustainability](https://thedpp.com/sustainability)